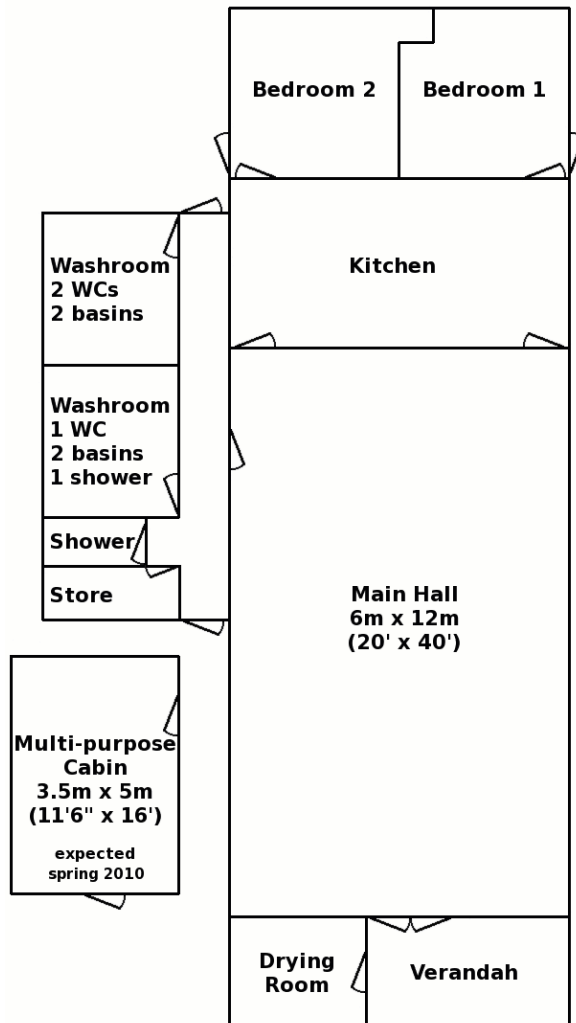


## Building plan



## For bookings and enquiries, contact:

Bookings Secretary  
Mrs P Briggs  
36 Old Road  
North Petherton  
Bridgwater  
Somerset  
TA6 6TG

Phone / Fax: 01278 662537

Email: [info@campbellroom.org.uk](mailto:info@campbellroom.org.uk)

## Location of the Campbell Room

Aley  
Over Stowey  
Bridgwater  
Somerset

Grid reference ST 186 381 (OS Explorer Map  
140 *Quantock Hills & Bridgwater*)

The exact Sat Nav GPS coordinates are  
51.13670, -3.16400. Alternatively use postcode  
TA5 1HB to provide an approximate location.

Our web site also contains links to several  
interactive maps which you may find useful.

---

**The Campbell Room is operated by  
Sedgemoor District Scouts**



Leaflet 1 - October 2009

# THE CAMPBELL ROOM

self catering  
accommodation for groups  
in Somerset's Quantock  
Hills



[www.campbellroom.org.uk](http://www.campbellroom.org.uk)

## Welcome to the Campbell Room

The Campbell Room offers low-cost self-catering group accommodation for up to 24 people in Somerset's Quantock Hills. It provides an ideal base for outdoor activities, exploring the local area, for training courses and for residential educational visits. The centre is centrally heated, operates throughout the year and accepts advance bookings from organised groups.

Located at the mouth of an attractive wooded valley leading to the heart of the Quantock Hills - England's first Area of Outstanding Natural Beauty - the centre is close to many routes for walking, cycling and horse riding, with extensive views from the moorland tops. It is just over a mile from the start of the Coleridge Way long distance footpath and within reach of National Cycle Routes 3 & 33. Groups with transport can also take advantage of the wide choice of activities and attractions in the surrounding area.



The neighbouring village of Nether Stowey, just over a mile from the Campbell Room, has a good range of local shops, pubs and a doctor. The nearest large towns are Bridgwater (9 miles to the east) and the county town of Taunton (10 miles to the south on the opposite side of the hills), both with railway stations and both located close to the M5 motorway.



Those wishing to train for the Duke of Edinburgh's Award, learn orienteering, engage in team-building exercises - or even just relax for a few days with a group of friends - will find that the Campbell Room provides a convenient base.

Outside the school holidays the Campbell Room can also be booked for day or evening events.

## The accommodation

The main entrance to the Campbell Room is under a large **verandah**, which is useful for changing outer clothes and boots. A door on the verandah provides access to a heated **drying room** where there are hooks for outer clothing and racks for shoes and boots.

The light and airy **main hall**, measuring 6m x 12m (20' x 40'), is equipped with tables and chairs and is used as a dining, study and activities room during the day. Mattresses are provided to sleep up to 18 in the hall at night.



Two **bedrooms**, each provided with 2 bunks and a bed, are normally used by staff. Pillows are supplied.

A new **multi-purpose cabin** will be built during spring 2010. While this will have the potential to accommodate up to 8 extra people, it will also provide greater flexibility in sleeping arrangements for mixed groups, or an additional room for activities.

Between the main hall and the bedrooms is a well equipped **kitchen**, with 2 sinks and 2 Calor gas cookers, microwave oven, a fridge freezer, cooking utensils, plus crockery and cutlery to suit groups of 24.

**Washing facilities** consist of three separate rooms with hot and cold water. One washroom is fitted with 2 WCs and 2 wash basins, a second contains 1 WC, 1 shower and 2 wash basins, while there is also a separate single shower.

**Outside** there is an area of grass where games can be played or a few small tents could be pitched, as well as a flag pole and campfire area with semi-circular seating.

In front of the building there is a **parking** area for a maximum of 3 cars or 2 minibuses (which must not intrude into the road). A further 3 cars can normally be parked in a nearby lay-by.

## The Quantock Hills

The Quantock Hills cover 39 square miles of unspoilt countryside, with around 150 miles of public footpaths and bridleways, as well as many undesigned routes.

The northern tops of the Quantocks are open moorland, covered in heather and gorse. The combs are a mixture of farmland, ancient oak woodland and coniferous trees. Ponies and deer roam the hills while buzzards, skylarks, jays and woodpeckers can often be seen overhead.

## The Somerset Levels

In contrast to the hills of the Quantocks, the nearby Somerset Levels offer some 250 square miles of rare wetland habitat including some 32 Sites of Special Scientific Interest and several National Nature Reserves and visitor centres. The River Parrett Trail and the Bridgwater & Taunton Canal are popular with walkers.

## Activities and attractions

As well as providing opportunities for a range of outdoor pursuits, other activities include visits to museums, country houses and gardens, travelling along the edge of the hills by steam train, exploring Somerset's Jurassic Coast, and bird watching on the Somerset Levels.

Trips are possible to attractions such as Cricket St Thomas Wildlife Park, Cheddar Gorge, Wookey Hole caves, Glastonbury, Wells, Butlins at Minehead, Dunster Castle and Exmoor.

Our web site contains many more ideas and links to help you plan your visit.

## Educational visits

A wide range of topics, from archaeology and the natural sciences, to history and the varied local geology, make the Campbell Room ideal for school groups and university field trips. Our web site contains further details.